

Ysgol Gyfun Pontarddulais Comprehensive School



Year 9 Options Evening

January 2022

Our Vision

OUR VISION

Through inclusion, respect and resilience we will become better people and successful lifelong learners.

MISSION STATEMENT

In partnership with our wider community, we strive to provide the environment and opportunities to maximise the progress of all our pupils.

Year 10 and 11 Curriculum Model (50 hours)

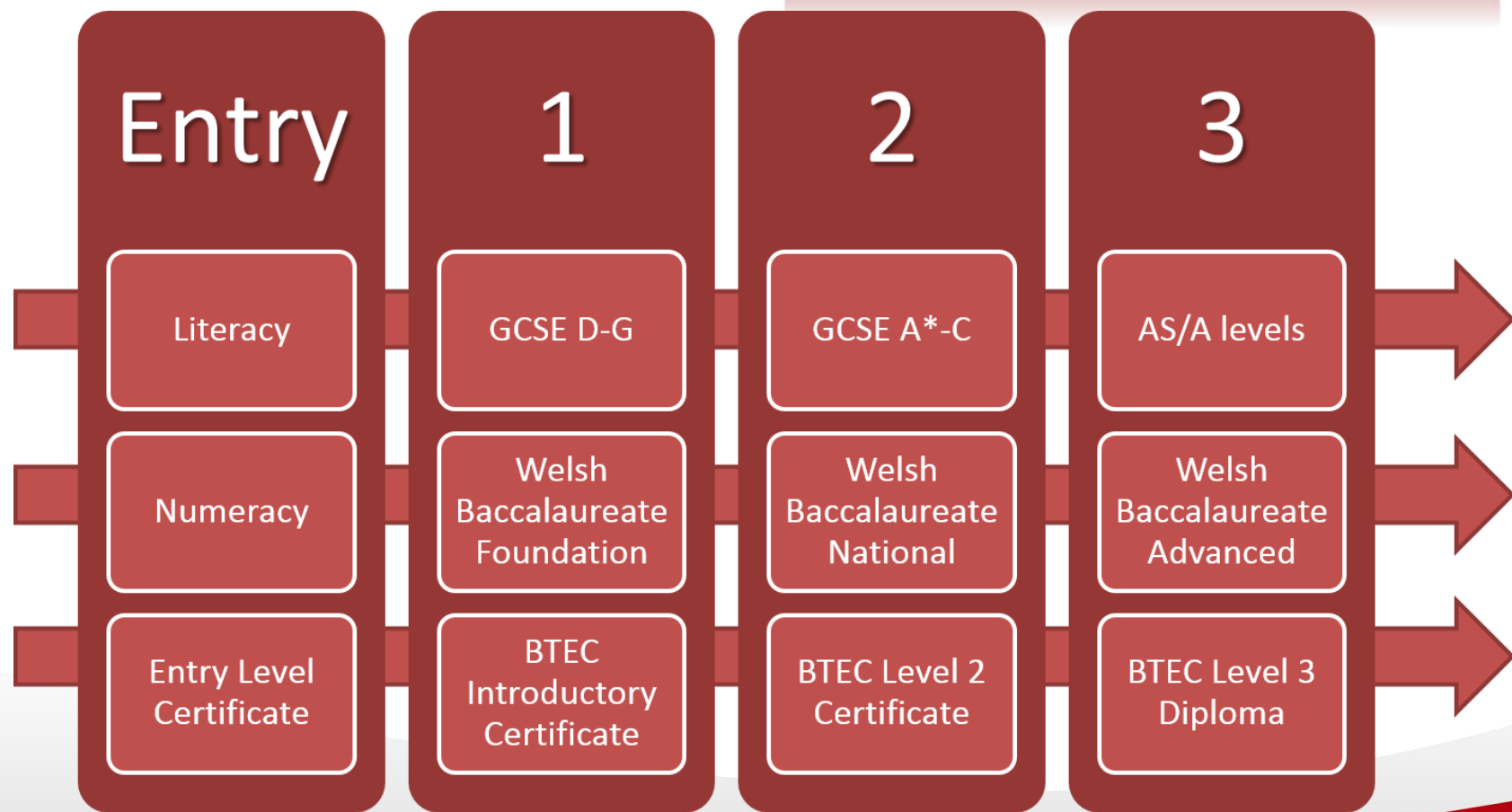
Subject	Number of lessons
English (2 GCSEs)	7
Maths (2 GCSEs)	8
Science (2 GCSEs)	9
Welsh (1 GCSE)	4
Welsh Baccalaureate (1 GCSE)	3
RE (Equality & Diversity)	2
PE	2
OPTION 1	5
OPTION 2	5
OPTION 3	5

PSE morning once per half term

What courses are available to study?

- **GCSEs** – the majority of courses studied
- **Welsh Baccalaureate** – skills based challenges
- **BTEC/Vocational** – developing skills that are directly linked to a line of work, e.g. business, carpentry, hairdressing.
- **Entry Level** – lower level qualifications to help develop skills in order to progress onto Level 1 or 2 qualifications.

What are the levels?



GCSEs

Maths

- Mathematics
- Maths Numeracy

English

- English Language
- English Literature

Science

- Double Award Science (2 GCSEs)
- Triple Science

Humanities

- Religious Studies
- History
- Geography

Technology

- Digital Technology
- D&T Product Design
- Food & Nutrition

Creative Arts

- PE
- Art
- Music

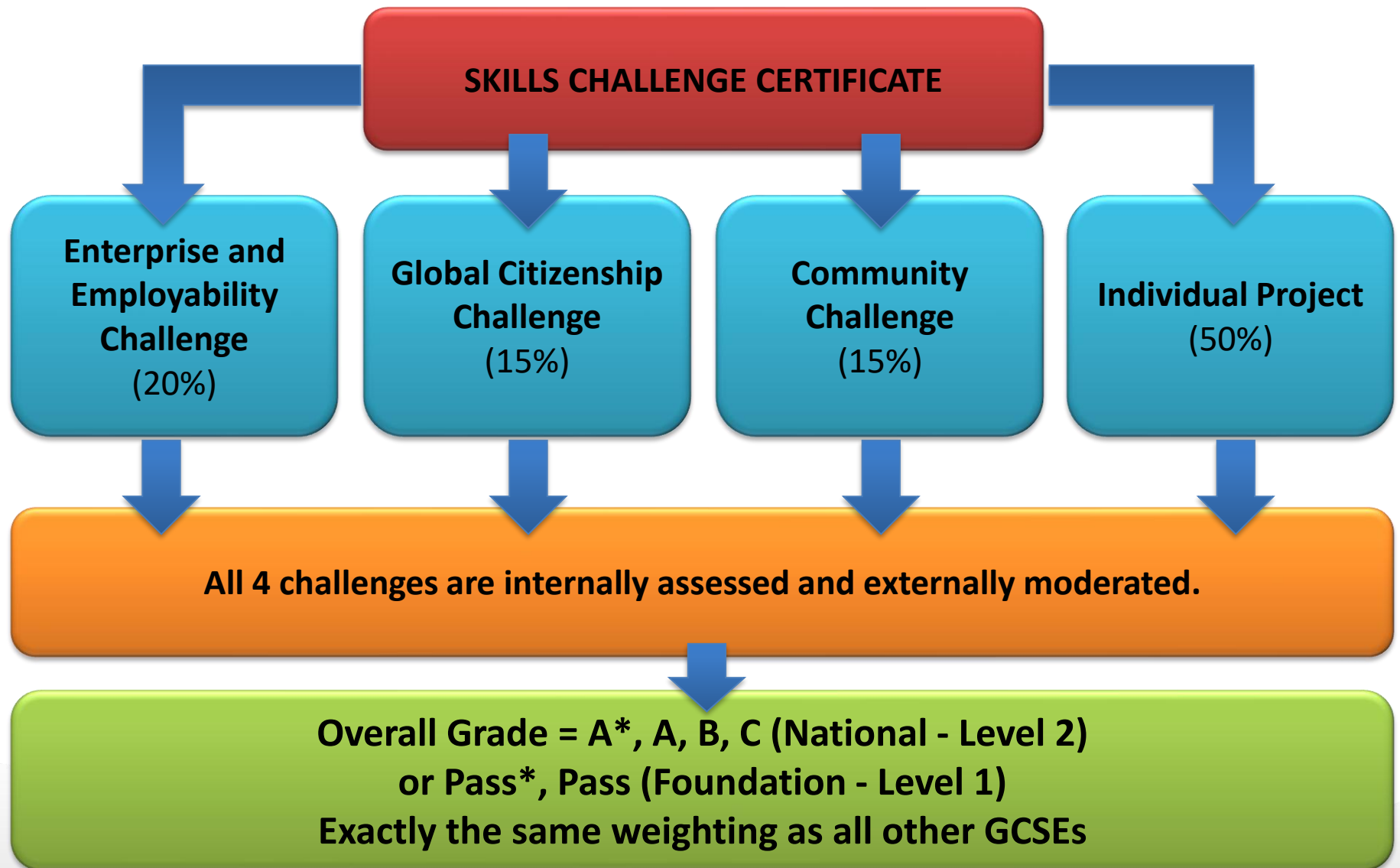
Languages

- Welsh
- French
- Spanish

Welsh Baccalaureate



- At Key Stage 4, all learners follow the same programme of learning for the Welsh Bacc.
- Their level is determined by assessment.
- Foundation (Level 1) – Pass* (D), Pass (F)
- National (Level 2) – A*, A, B, and C



BTEC courses

- *Assessment mainly based upon work produced in lessons.*
- *Some courses have examinations contributing.*
- *Most courses are Level 2 allowing for progression to level 3 in college*

BTEC Result	GCSE Equivalent
Distinction *	A*
Distinction	A
Merit	B
Pass	C

BTEC Level 2 Public Services

The BTEC provides you with the knowledge, skills and understanding you will need when moving towards a career in the uniformed services, such as:

- ***Police***
- ***Emergency Fire Services***
- ***Prison Service***
- ***Armed Forces***



BTEC Level 2 Business Studies

The course has been designed to develop knowledge and understanding in the business sector.

- ***Office management***
- ***Business administration***
- ***Marketing & advertising***
- ***Running a business***



BTEC Level 2 Performing Arts

BTEC

The BTEC Certificate in Performing Arts prepares you for higher vocational qualifications or employment within the Performing Arts sector.

- 1. Acting [live performances]***
- 2. Production [sound, lighting, set design, costume design, make-up, stage management].***

Both options are taught together and involve visits to live theatre performances and workshops with theatrical practitioners.



Vocational Courses

These provide opportunities to get practical recognised qualifications in speciality areas either in school or a partner provider.

Courses available:

1. Level 1 Performance Engineering – at Gower College
2. Level 2 Engineering – in school
3. Level 1 Hair & Beauty – in school
4. Level 2 Health and Social Care, and Childcare – in school



Benefits

- Suits more active learners who enjoy hands on tasks and practical activities.
- Will support pupils who have a chosen career path in mind.
- A suitable choice for pupils who wish to undertake an apprenticeship on leaving school.

Performance Engineering



Gower College Swansea
Coleg Gŵyr Abertawe

BTEC Level 1 Performance Engineering

Four units:

1. Motor vehicle maintenance
2. Electrical engineering
3. Plumbing
4. Welding



Engineering Level 2

WJEC Level 2 Award in Engineering

Three units:

1. **Engineering Design** – design based project using CAD: Computer Aided Design (25%).
2. **Producing Engineering Products** – practical based manufacturing project using a range of engineering tools, material and equipment (50%).
3. **Solving Engineering Problems** – theory based and a written examination (25%).



Level 1 Hair & Beauty

BTEC Hair & Beauty Skills

- Units include:
 - Looking After Customers
 - Carrying Out a Treatment
 - Demonstrating Nail Art
 - Demonstrating Make-up Techniques
 - Demonstrating Hair Styling

Includes coursework and portfolio work coupled with practical skills



Childcare

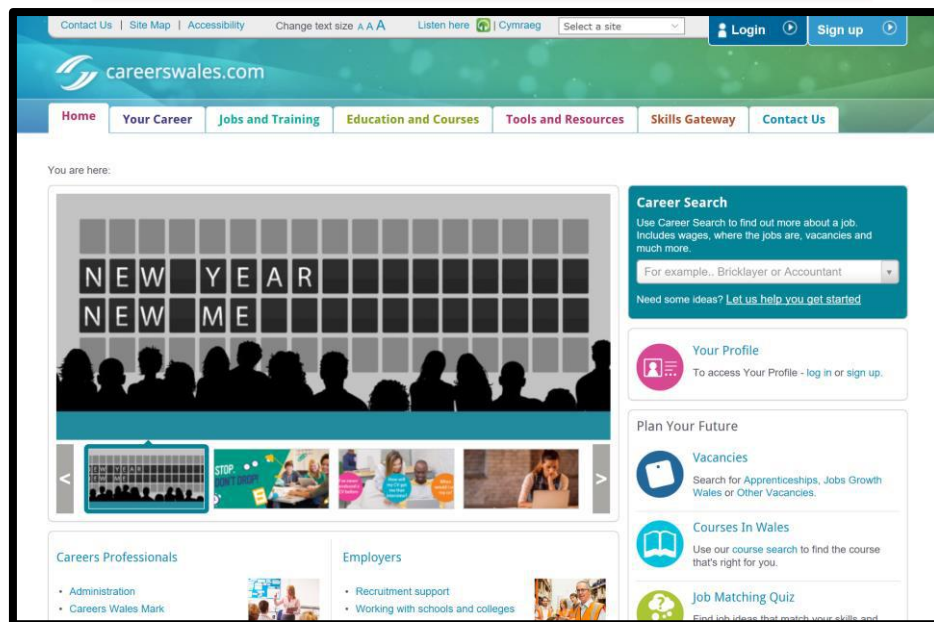
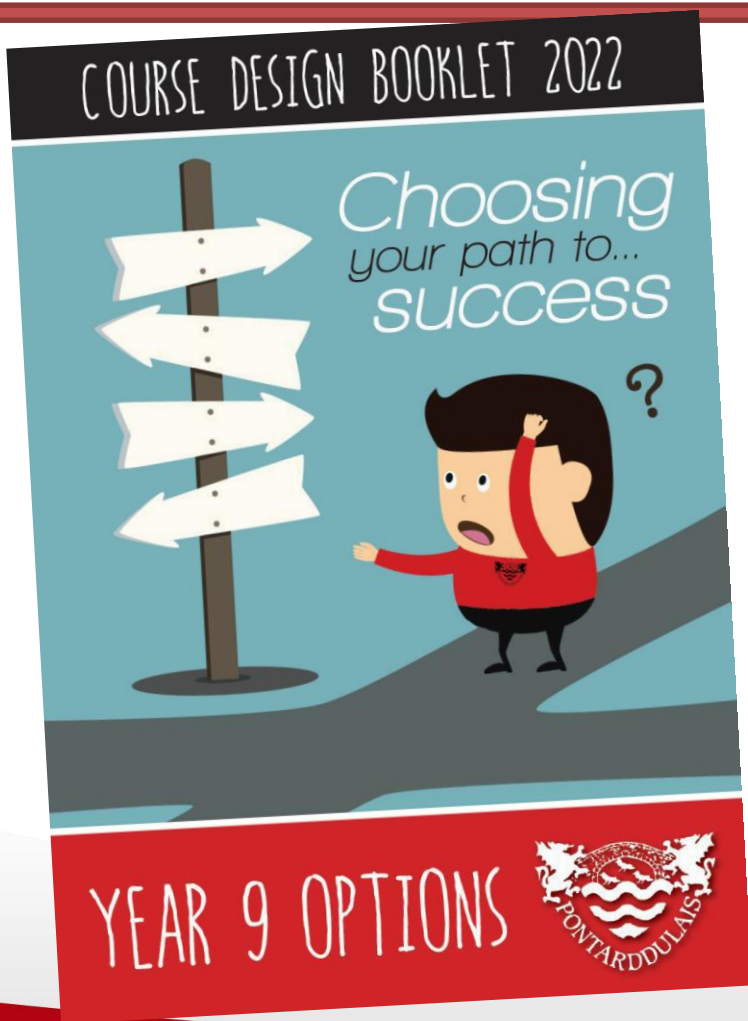
WJEC Level 1/Level 2 GCSE in Health and Social Care, and Childcare.

- Unit 1 - Human Growth, Development and Well-being. ***Written examination: 1 hour 30 minutes (40% of qualification).***
- Unit 2 - Promoting and Maintaining Health and Well-being. ***Non-exam assessment: internally assessed, externally moderated (60% of qualification).***



Careers Advice – Mr. Davies

Where do I look?



<http://careerswales.com/>

Byw I ddysgu ...
... Dysgu byw



Advice

1. Find out the facts:

Read the booklet carefully

What are the demands of the subject?

Will you enjoy the subject?

Is it what you need for college or employment?

2. Choose sensibly at your ability level:

Be honest as to what you can and can't manage

Make sure you can cope with the amount of work

3. Do not

- Choose a subject because you like the teacher or because your friends choose it.
- Choose a subject because it looks easy. There are no easy subjects!

What Next ??

- *Speak with subject teachers, Mrs Wilcox, Mr Lewis, Mr Davies (Careers), any member of staff.*
- *Options booklet and online options form*
- *Subject specific breakdown of course content and assessment*

Year 9 Options Form 2022

Please select ONLY THREE OPTIONS from the subjects list below. The options form must be completed by Monday 7th February. Once the options form has been completed by all pupils in the year group the subjects will be split into three option pools. This will be a 'best fit' model for the year group.

Unfortunately some pupils will not be able to study all three of their first choice options. If you have been affected you will be contacted shortly after the options deadline and you will be asked to complete a second options form, selecting one subject from each pool.

* Required

1. Child's first name *

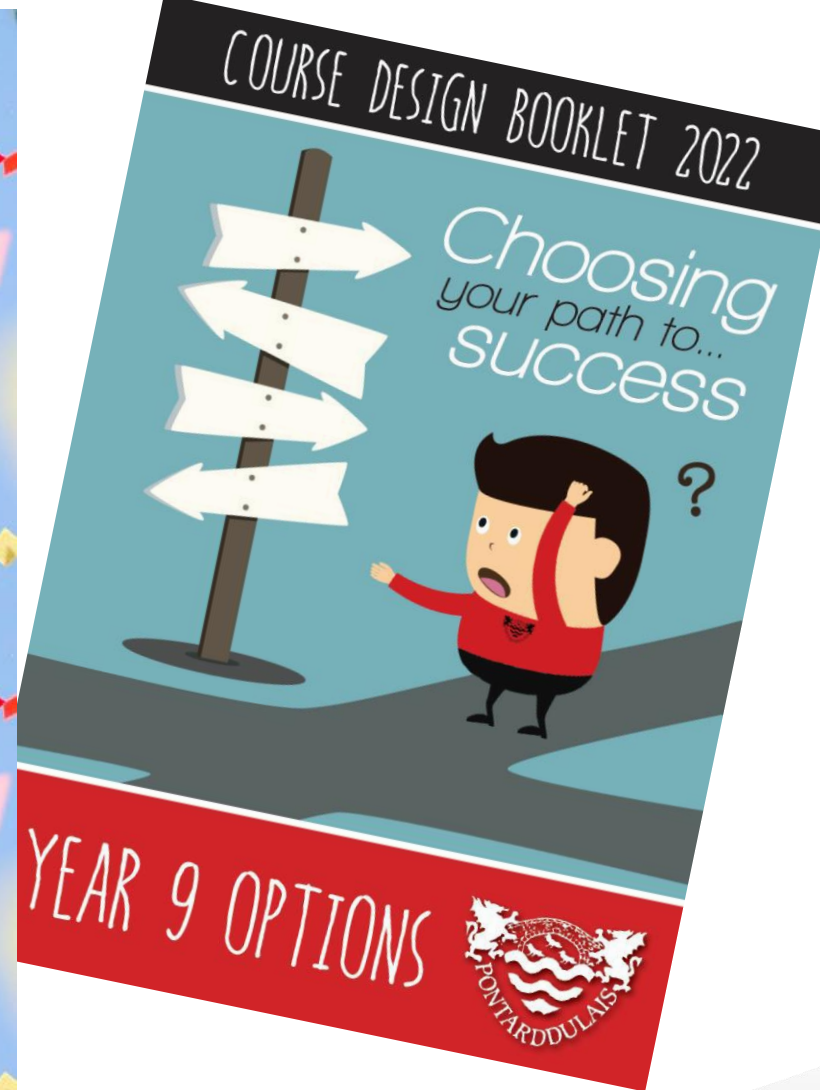
2. Child's surname *

3. Child's form class *

- ☐ 9P
☐ 9O
☐ 9N
☐ 9T
☐ 9I
☐ 9S
☐ 9A

4. Please select THREE OPTIONS from the list of subjects below: *

- ☐ GCSE Art & Design
☐ GCSE Music
☐ BTEC Level 2 Performing Arts
☐ GCSE Triple Science
☐ GCSE Digital Technology (ICT)
☐ GCSE D&T Product Design
☐ GCSE Physical Education
☐ GCSE Food & Nutrition
☐ GCSE Geography
☐ GCSE History
☐ GCSE Religious Studies
☐ GCSE French
☐ GCSE Spanish
☐ BTEC Level 2 Business Studies
☐ BTEC Level 2 Public Services
☐ WJEC Level 2 Childcare (vocational)
☐ BTEC Level 1 Hair & Beauty (vocational)
☐ BTEC Level 1 Performance Engineering (vocational)
☐ WJEC Level 2 Engineering (vocational)



Forms & Dates

- Options Evening Launch - **Monday 17th January**
- Year 9 Parents' Evening – **Monday 24th January**
- 1st Option Forms completed online by **Monday 7th February**
- 'Best-fit' model created
- 2nd Option Forms – We will notify you by **Monday 14th February** – this is only given to those pupils who do not fit the 'best-fit' model.

Mr. Lewis' Golden Rules

1. Enjoyment
2. Successful
3. My future



options@pontcomp.co.uk